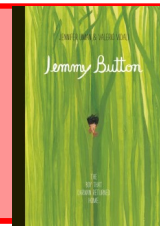


How can you grow like Frida Kahlo?



Jemmy Button—by Alix Barzelay

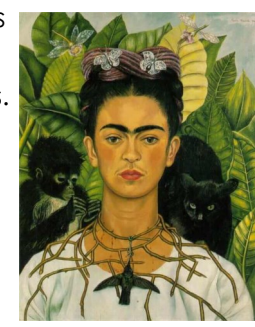
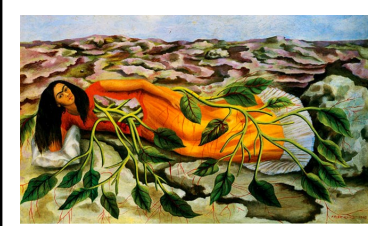
Frida Kahlo was born in 1907 and died in 1954.

She was born in Mexico City. Her home, 'The Blue House' became a museum after she died.

Frida contracted polio when she was six. She had to stay in bed for nearly a year. She played sports like football, swimming and wrestling to help recover her strength. Frida had a nearly fatal bus accident when she was 18, she had to wear a whole body cast for 3 months.



Frida grew all sorts of exotic plants in her garden. She often used plants and flowers in her paintings.



Frida Kahlo used her paintings to express her feelings and heart break. She painted over sixty self portraits. Her art is considered 'surrealist' as it portrays all images from the mind, even from dreams.

Which city, country, continent did Frida Kahlo come from?

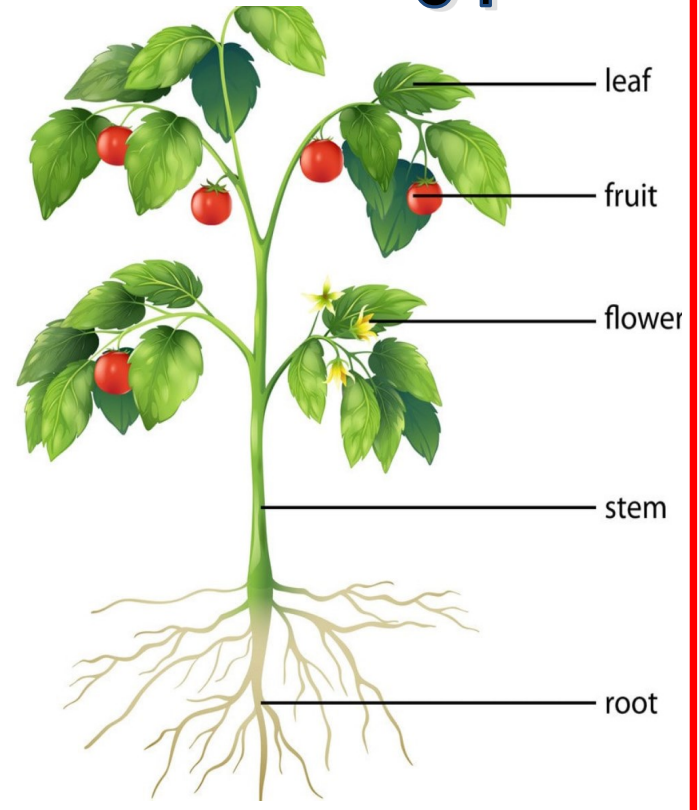


Mexico.
North America

Stone age 10,000 BC | The Egyptians | The Mayans | The Ancient Greeks discovered the Earth was spherical. 240 BC | The Romans 27 BC | 1AD | Robert Bakewell 1725 | The Victorians | Frida Kahlo 1907-1954 | 2022

Surrealism	A movement in art and literature which shows the creative potential of the unconscious mind
Climate	The weather conditions in an area over a long period
Continent	A main expanse of land
country	A nation with its own government
Pollination	The transfer of pollen to allow fertilisation
Germination	The development of a plant from a seed
Stamen	The male fertilising organ of a plant
stigma	The part of the plant that receives pollen during pollination

What are the parts of a flowering plant?



What is the life cycle of a flowering plant?

